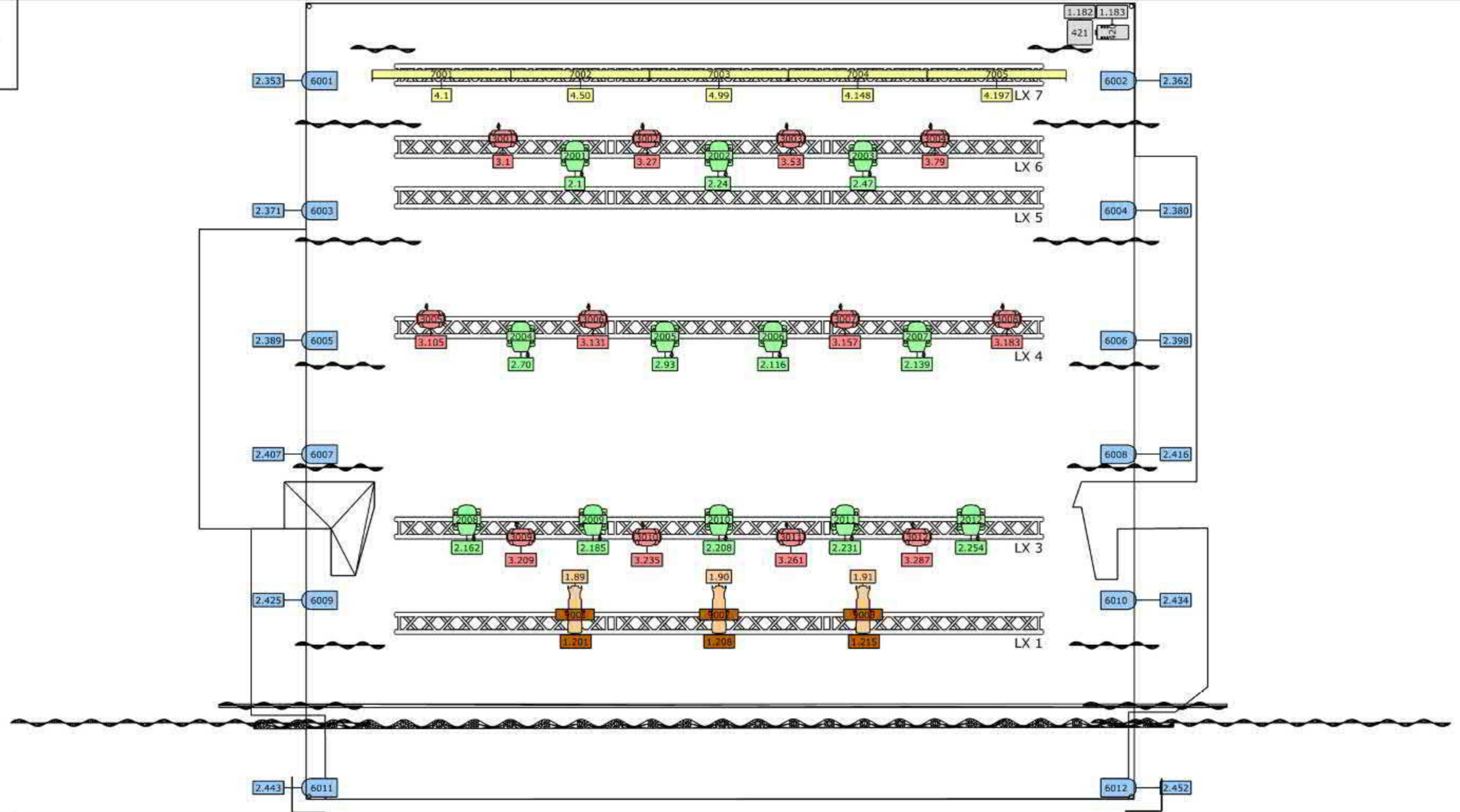
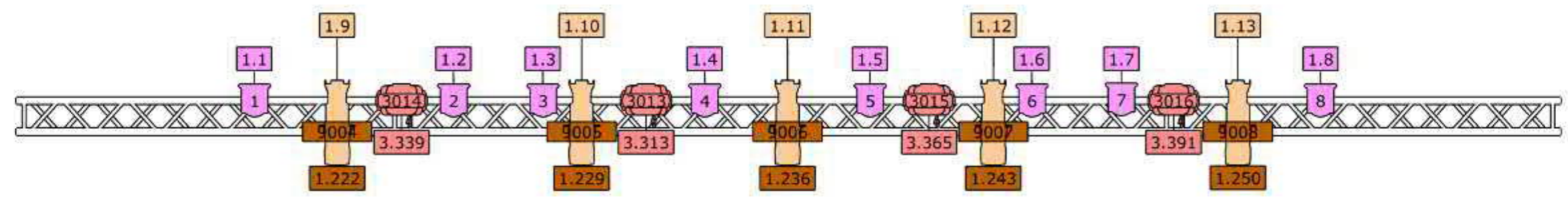


STAGE LX'S,
AUDIENCE AT
THE BOTTOM



FRONT LX



Project	Lighting plot 2025	Additional fixtures available on request. Conventional and LED	Symbol key	
Technical Director	Nikolaos Kolomvakis		Zonda 3 Wash (16)	AutoYoke Ellipsoidal (8)
Drawing Version	v 1.0		Fuze Par Z175 (12)	Leonardo 1kW M.O. (8)
			Axcor Spot 300 (12)	Color Force 72 (5)
			Source 4WRD 36° (8)	Pea Soup Phantom Hazer

Lighting plot 2025

Savoy Theater

Fixtures

ID	Name	Patch	Mode	Location
1	De Sisti Lighting Leonardo 1kW M.O.	1.1	Control	
2	De Sisti Lighting Leonardo 1kW M.O.	1.2	Control	
3	De Sisti Lighting Leonardo 1kW M.O.	1.3	Control	
4	De Sisti Lighting Leonardo 1kW M.O.	1.4	Control	
5	De Sisti Lighting Leonardo 1kW M.O.	1.5	Control	
6	De Sisti Lighting Leonardo 1kW M.O.	1.6	Control	
7	De Sisti Lighting Leonardo 1kW M.O.	1.7	Control	
8	De Sisti Lighting Leonardo 1kW M.O.	1.8	Control	
420	Pea Soup Phantom Hazer	1.183	Standard	
421	Antari AF-3 Fan	1.182	Standard	
2001	Clay Paky Axcor Spot 300	2.1	Standard	
2002	Clay Paky Axcor Spot 300	2.24	Standard	
2003	Clay Paky Axcor Spot 300	2.47	Standard	
2004	Clay Paky Axcor Spot 300	2.70	Standard	
2005	Clay Paky Axcor Spot 300	2.93	Standard	
2006	Clay Paky Axcor Spot 300	2.116	Standard	
2007	Clay Paky Axcor Spot 300	2.139	Standard	
2008	Clay Paky Axcor Spot 300	2.162	Standard	
2009	Clay Paky Axcor Spot 300	2.185	Standard	
2010	Clay Paky Axcor Spot 300	2.208	Standard	
2011	Clay Paky Axcor Spot 300	2.231	Standard	
2012	Clay Paky Axcor Spot 300	2.254	Standard	
3001	Ayrton Zonda 3 Wash	3.1	Basic	
3002	Ayrton Zonda 3 Wash	3.27	Basic	
3003	Ayrton Zonda 3 Wash	3.53	Basic	
3004	Ayrton Zonda 3 Wash	3.79	Basic	
3005	Ayrton Zonda 3 Wash	3.105	Basic	
3006	Ayrton Zonda 3 Wash	3.131	Basic	
3007	Ayrton Zonda 3 Wash	3.157	Basic	
3008	Ayrton Zonda 3 Wash	3.183	Basic	
3009	Ayrton Zonda 3 Wash	3.209	Basic	
3010	Ayrton Zonda 3 Wash	3.235	Basic	
3011	Ayrton Zonda 3 Wash	3.261	Basic	
3012	Ayrton Zonda 3 Wash	3.287	Basic	
3013	Ayrton Zonda 3 Wash	3.313	Basic	
3014	Ayrton Zonda 3 Wash	3.339	Basic	
3015	Ayrton Zonda 3 Wash	3.365	Basic	
3016	Ayrton Zonda 3 Wash	3.391	Basic	

6001	Elation Fuze Par Z175	2.353	9 Channel RGBW	
6002	Elation Fuze Par Z175	2.362	9 Channel RGBW	
6003	Elation Fuze Par Z175	2.371	9 Channel RGBW	
6004	Elation Fuze Par Z175	2.380	9 Channel RGBW	
6005	Elation Fuze Par Z175	2.389	9 Channel RGBW	
6006	Elation Fuze Par Z175	2.398	9 Channel RGBW	
6007	Elation Fuze Par Z175	2.407	9 Channel RGBW	
6008	Elation Fuze Par Z175	2.416	9 Channel RGBW	
6009	Elation Fuze Par Z175	2.425	9 Channel RGBW	
6010	Elation Fuze Par Z175	2.434	9 Channel RGBW	
6011	Elation Fuze Par Z175	2.443	9 Channel RGBW	
6012	Elation Fuze Par Z175	2.452	9 Channel RGBW	
7001	Chroma-Q Color Force 72	4.1	1s + 12 x RGBI Mode	
7002	Chroma-Q Color Force 72	4.50	1s + 12 x RGBI Mode	
7003	Chroma-Q Color Force 72	4.99	1s + 12 x RGBI Mode	
7004	Chroma-Q Color Force 72	4.148	1s + 12 x RGBI Mode	
7005	Chroma-Q Color Force 72	4.197	1s + 12 x RGBI Mode	
9001	City Theatrical AutoYoke Ellipsoidal	1.201	[rES=16bt]	AUTOYOKE HEAD
9001.1	ETC Source 4WRD 36°	1.89	Control	AUTOYOKE LAMP
9002	City Theatrical AutoYoke Ellipsoidal	1.208	[rES=16bt]	AUTOYOKE HEAD
9002.1	ETC Source 4WRD 36°	1.90	Control	AUTOYOKE LAMP
9003	City Theatrical AutoYoke Ellipsoidal	1.215	[rES=16bt]	AUTOYOKE HEAD
9003.1	ETC Source 4WRD 36°	1.91	Control	AUTOYOKE LAMP
9004	City Theatrical AutoYoke Ellipsoidal	1.222	[rES=16bt]	AUTOYOKE HEAD
9004.1	ETC Source 4WRD 36°	1.9	Control	AUTOYOKE LAMP
9005	City Theatrical AutoYoke Ellipsoidal	1.229	[rES=16bt]	AUTOYOKE HEAD
9005.1	ETC Source 4WRD 36°	1.10	Control	AUTOYOKE LAMP
9006	City Theatrical AutoYoke Ellipsoidal	1.236	[rES=16bt]	AUTOYOKE HEAD
9006.1	ETC Source 4WRD 36°	1.11	Control	AUTOYOKE LAMP
9007	City Theatrical AutoYoke Ellipsoidal	1.243	[rES=16bt]	AUTOYOKE HEAD
9007.1	ETC Source 4WRD 36°	1.12	Control	AUTOYOKE LAMP
9008	City Theatrical AutoYoke Ellipsoidal	1.250	[rES=16bt]	AUTOYOKE HEAD
9008.1	ETC Source 4WRD 36°	1.13	Control	AUTOYOKE LAMP